

**HUBEI JOABOA TECHNOLOGY CO., LTD.**

ADD:Jinyang Road, Yangluo economic Development District, Wuhan, China  
TEL: 027-51909791  
FAX: 027-51315555-8040  
P.C.: 430415

**TIANJIN JOABOA TECHNOLOGY CO., LTD.**

ADD:Road 24, South Area, Jinghai Economic Development Zone, Tianjin  
TEL: 022-59003580  
FAX: 022-59003583  
P.C.: 301600

**HUIZHOU JOABOA TECHNOLOGY CO., LTD.**

ADD: Lidong Industrial Park, Jiutan, Yuanzhou Town, Boluo County, Huizhou City, Guangdong Province, China  
TEL: 0725-6981176  
FAX: 0752-6981176  
P.C.: 516129

**SUZHOU JOABOA TECHNOLOGY CO., LTD.**

ADD:Shuangta Bridge North, Qidu Town, Wujiang City, Jiangsu Province, China  
TEL: 0512-63828558  
FAX: 0512-63828705  
P.C.: 215234

**CHENGDU JOABOA NEW BUILDING MATERIALS CO., LTD.**

ADD:Choucheng Road, Huaikou Town, Jintang Country, Chengdu City, Sichuan Province, China  
TEL: 028-84150066  
FAX: 028-84150066  
P.C.: 610404

**FUSHAN TOYU BUILDING MATERIALS CO., LTD.**

ADD:F1, No. 73-1, North Area, International Torch programme Foshan Electronic and Electrical Industry Base, Baini Town, Sanshui Area, Foshan City, Guangdong Province  
TEL: 0757-87267138  
P.C.: 528100

**HUBEI JOABOA BUILDING ENERGY SAVING TECHNOLOGY CO., LTD.**

ADD:Jinyang Road, Yangluo economic Development District, Wuhan, China  
TEL: 0725-6981176  
FAX: 0752-6981176  
P.C.: 516129



LinkedIn ID

**SHENZHEN JOABOA TECHNOLOGY CO., LTD**

Add.: Floor 16th, No.2 North Area, Excellence City Central Square,  
Melin, Futian Dist., Shenzhen, Guangdong, China  
Zipcode: 518049  
Tel.: +86 0755 33052250  
Website: <https://portal.zhuobao.com/en>  
Email: [International@zhuobao.com](mailto:International@zhuobao.com)



YouTube ID:  
JOABOA TECH

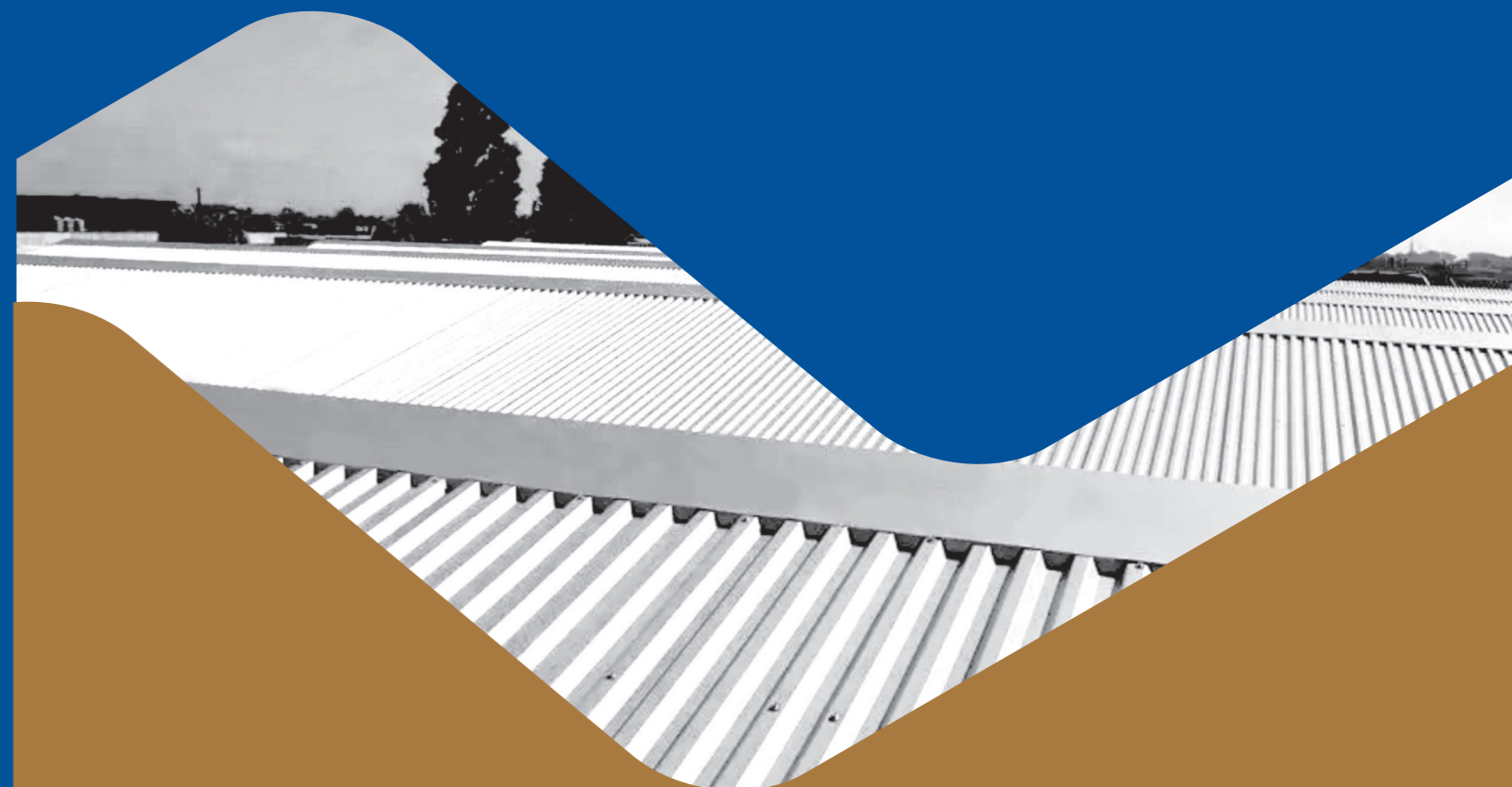


Mobil  
+86 18680323957



WhatsApp  
+86 18680323957

# TPO WEATHER RESISTANT BUTYL SELF-ADHESIVE WATERPROOF MEMBRANE



Ver.:20220608

SHENZHEN JOABOA TECHNOLOGY CO.,LTD.

## Why choose to work with Joaboa Tech?

### Leader in China Building Waterproof Industry

- Presidium Member of of CWA-China Building Waterproofing Association
- Famous Brand Preferred by Top 500 Real Estate Companies

### Stronger Production Capacity & Export Advantages

- Imported Production Lines & Raw Materials from USA, ITALY
- Various of Products for Waterproof, External and Interior Wall & Floor Hardening

### Pioneer of High Quality Waterproof System

- Top Sales of Self-adhesive Waterproofing Membranes in the World
- Inventor of Wet-application & Skin-type Waterproof Theory

### Closer to Target Market & Business Partners

- Customized Products & Conference Marketing Strategy
- Customer-centered Service, Tightly Bonded with Business Partners

### Pathfinder in Product & Technology

- Inventor of Self-adhesive Bituminous Membrane in China
- Firstly Set up Waterproof Engineering Insurance System in Chinese Mainland

## → COMPANY PROFILE

Shenzhen Joaboa Technology Group (hereinafter referred to as Joaboa Tech) is an industry-leading functional building material system service provider, as well as a national high-tech enterprise, which was established in 1999.

Joaboa Tech is headquartered in Shenzhen, with eight modern production bases located in Tianjin, Suzhou, Shishou, Wuhan, Chengdu, Huizhou, Shishou and Foshan, with several branches spread over the country. Joaboa Tech has achieved more than 100 core national patents, and developed 2 national key new products and 5 FM APPROVED medium and high-end PVC/TPO roofing sheet and WICI Waterproof & Insulation integrated products. Joaboa Tech has 5 major industry standard laboratories with strong technical research and development capabilities, which not only have been selected as Key Laboratories of Guangdong Province, but also approved by CNAS-China National Accreditation Service for Conformity Assessment.

Being as a Top 3 brand of building Waterproof/Decoration & Energy-saving/Floor Hardening materials from China, Joaboa Tech's products and systems are widely used in major infrastructure construction, industrial buildings and civil & commercial buildings, with landmark projects such as Beijing 2008 Olympic Games Stadium, HUAWEI Bantian Base, Tencent Headquarter, Canton Fair Stadium, Crescent Mall (Vietnam), Urban Village (Cambodia), Jontian No. 1 Condominium (Thailand) etc.

As the Pioneer of High Quality Waterproof Service System, Joaboa Tech will continue to dedicate non-leakage Waterproof projects to the society, and care for the poetic and peaceful living of human beings!



## ➔ ROOF RENOVATION AND MAINTENANCE MARKET

Because of the corrosion, aging and deformation, many old roofs are facing with leakage issues. And it is lack of a perfect waterproofing material that can solve the leakage issue easily and efficiently.

95.33%	Poor waterproof materials, unreasonable waterproof design, unprofessional construction and many other factors lead to the high building leakage rate. The survey shows that the leakage rate of international building roofs is as high as 95.33%.
6-8 Years	On average, houses need to be renovated every 6-8 years. In order to pursue perfect shape, the waterproof design of some buildings is unreasonable, and leakage occurs in even 3-5 years.
2,000,000,000m <sup>2</sup>	According to statistics, about 2,000,000,000 m <sup>2</sup> of roofs in China need to be renovated every year. However, there is a lack of high-quality waterproof membranes with good weather resistance in the market.

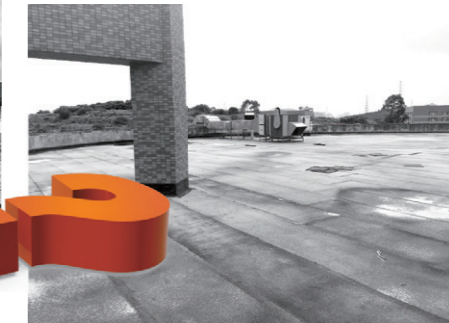
Is it very difficult to repair traditional roofs?

Long Period	Traditional roof renovation needs to remove the entire roof, clear garbage, and then redo the processes of leveling, sloping, waterproofing, thermal insulation and protection, which is time-consuming and laborious.
Difficult Construction	The traditional SBS waterproofing membrane can only be constructed after re-leveling in the maintenance projects, and the Torch-on Applied membrane has high technical requirements for workers. At the same time, there are also potential fire hazards.
High Cost	The traditional roof has high renovation cost, short service life of waterproof layer and high comprehensive cost of repeated maintenance.
Easy to Aging	In order to save renovation costs, non-exposed waterproofing membranes are often used as exposed on the market, which accelerates the aging of the membranes and loses the function of waterproof performance.



Difficult Renovation, Long Period, High Cost

## TRADITIONAL ROOF RENOVATION



Non-exposed materials are easy to age and have short service life



## Good Products Build Good Projects

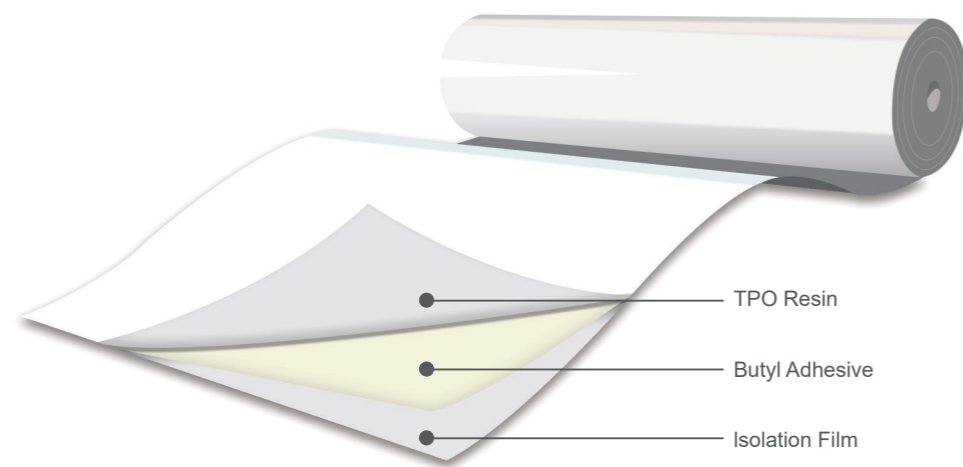
JOABOA specially developed for roof maintenance engineering Polymer Self-adhesive Waterproofing Membrane Series are hot on the market  
No drilling, peeling & sticking, excellent UV resistance!



# TPO WEATHER RESISTANT BUTYL SELF-ADHESIVE WATERPROOF MEMBRANE







## ➔ PRODUCT INTRODUCTION

TPO Weather Resistant Butyl Self-adhesive Waterproof Membrane is a polymer waterproof material specially developed for leakage maintenance engineering. It is composed of homogeneous TPO polymer sheet, polymer butyl rubber layer and isolation film. It has the characteristics of convenient construction, good bonding effect, high tensile strength, high elongation, chemical corrosion resistance and aging resistance. It can be applied to waterproof maintenance projects of various buildings.



TPO Weather Resistant Butyl Self-adhesive Waterproof Membrane Structural Diagram

## ➔ PRODUCT FEATURES

-  Excellent Aging Resistance: The warranty period of different materials is 5 years and 20 years, and the actual service life is longer.
-  Strong Chemical Corrosion Resistance: It has the ability to resist acid, alkali and salt corrosion, and can be directly exposed for use.
-  Excellent Physical and Mechanical Properties: High tensile strength, large elongation and strong resistance to structural deformation.
-  Soft Material and Good Adhesion: It can provide various thickness specifications such as 0.9mm and 1.2mm.
-  Simple Construction, Safe and Environmentally Friendly: Self-adhesive, wet-applied and other construction methods can be selected depending on the different situation. The construction is simple and there is no solvent or fire in the process, which is safe and environmentally friendly.
-  Reduce Energy Consumption and Energy Saving: The light colored surface can reflect sunlight.

## ➔ SPECIFICATIONS

Name	Thickness (mm)	Width(mm)	Length (m)
TPO Weather Resistant Butyl Self-adhesive Waterproof Membrane	0.9	1000/2000	30
	1.2	1000/2000	30

Note: Other specifications can be determined by negotiation between the supplier and the customer.

# PERFORMANCE INDEX

Q/12TJZB022-2022 TPO Weather Resistant Butyl Self-adhesive Waterproof Membrane

No.	Items		Index	
1	Tensile Property	Tensile Strage/M Pa	≥ 12	
		Elongation at Break/%	≥ 500	
2	Tear Strength/N,	≥	20	
3	Heat Resistance(100°C, 2h)		No Slipping, Flowing, Dripping≤2mm	
4	Low Temperature Flexibility		-40°C, No Cracking	
5	Low Temperature Bending		-40°C, No Cracking	
6	Impermeable(0.3MPa, 120min)		Impermeable	
7	Oil penetration/ sheet pieces	≤	2	
8	Nail Water tightness		Approval	
9	Thermal Stability		No bulging and flowing	
10	Dimensional Stability /%	≤	1.5	
11	Holding Power/ Min	≥	20	
12	Peel Strength / (N/mm)	Membrane With Membrane (Overlap Edge)	No Treatment	≥ 1.5
			Heat Treatment	≥ 1.0
			Water Immersion	≥ 1.0
		With Cement-based Panel	No Treatment	≥ 1.5
			Heat Treatment	≥ 1.0
			Water Immersion	≥ 1.0
		With Steel Plate	No Treatment	≥ 1.5
			Heat Treatment	≥ 1.0
			Water Immersion	≥ 1.0
13	Peel Strength with Cement Mortar / (N/mm)	No Treatment	≥ 2.0	
		Heat Treatment	≥ 1.5	
14	Peel Strength with Cement Mortar After Immersed in Water N/mm	≥	1.5	
15	Thermal Aging Test (80°C, 168h)	Retention Rate of Tensile Strength %	≥ 90	
		Retention Rate of Elongation %	≥ 90	
		Low Temperature Flexibility	-38°C, No Cracking	
		Low Temperature Bending	-38°C, No Cracking	
16	Artificial Weathering Accelerated Aging	Time/h	2500 <sup>a</sup>	
		Appearance	No Bulking, Slipping, Flowing	
		Retention Rate of Tensile Strength %	≥ 90	
		Retention Rate of Elongation %	≥ 90	
		Low Temperature Flexibility	-38°C, No Cracking	
		Low Temperature Bending	-38°C, No Cracking	

<sup>a</sup>The durability life is 20 years, and the artificial weathering accelerated aging time is 5490h.

## CONSTRUCTION PROCESS

### ◆ Maintenance and Repair on Concrete Roof



Cleaning Substrate



Brushing Primer



Paving the Membrane while Uncovering the Bottom Isolation Film



Self-adhesive Overlap or HotAir Welding

(Note: the thickness of the sheet during hot air welding is not less than 0.9mm)



Details Treatment



Inspection and Acceptance

**Note:** Dry-applied and wet-applied can be adopted for concrete roof.

### ◆ Color Steel Sheet Roof Maintenance



Cleaning and Derusting of Original Roof Color Steel Sheet



Positioning & Marking



Paving the Membrane while Uncovering the Bottom Isolation Film



Self-adhesive Overlap or Hot Air Welding

(Note: the thickness of the sheet during hot air welding is not less than 0.9mm)



Detail Parts Treatment



Finish

**Note:** This material can be used in concrete roof and color steel sheet roof, as well as glass and other roofs.

## ➔ APPLICATION SCOPE

It is suitable for waterproof maintenance of various exposed and non-exposed concrete roofs, light steel roofs, glass daylighting roofs and so on.



## ➔ CONSTRUCTION POINTS

- ◆ During construction, the surface of the base layer should be cleaned to maintain sufficient strength and cleanliness, and there should be no quality problems such as dusting, powdering, hollowing, and rust. If necessary, special treatment agent should be applied.
- ◆ It is forbidden to wear spiked shoes and step on the waterproof layer.
- ◆ When using this material for local maintenance, the overlapping parts with the old waterproof layer should be cleaned up, the detailed parts should be handled in place and sealed tightly.
- ◆ During the construction of wet-applied method, the materials need to be customized and matched with special bonding mortar.
- ◆ It is strictly prohibited to place sharp objects directly on the completed waterproof layer without protective measures. It is not allowed to consign heavy utensils and transportation equipment on the unprotected waterproof layer. It is strictly prohibited to make holes on the completed waterproof layer. In case of damage, it is necessary to timely notify the waterproof unit for repair.

## ➔ STORAGE AND TRANSPORTATION

- ◆ Products of different types and specifications shall be stacked separately and shall not be mixed.
- ◆ It should be protected from sunlight, rain and under ventilated.
- ◆ The storage temperature should be under 45°C and the membrane shall not be placed horizontally, but stacked in a single layer when placed vertically.
- ◆ Prevent tilting or side pressure during transportation, and cover it if necessary.
- ◆ Under normal storage and transportation conditions, the storage period is one year from the production date.